

# Screw Cover Pull Boxes



## Application

Designed for use as a junction box and pull box in commercial and general industrial applications. Flush covers and door frames must be ordered separately for flush installations.

## Construction

- 16 gauge, 14 gauge, or 12 gauge steel or galvanized steel
- Flat, removable covers fastened with plated steel screws
- Unique keyhole screw slots in the cover permit removal of the cover without extracting the screws
- Available with or without knockouts. Various sizes of easily removable concentric knockouts on all four sides of standard boxes with knockouts.
- Provision for grounding
- Mounting holes on back of box
- Optional flush-mounted door frame available
- Optional flush covers are designed to mount on enclosures for flush installations

## Finish

ANSI 61 gray polyester powder finish inside and out over phosphatized surfaces or galvanized steel. Unless otherwise specified, all custom pull boxes are finished with gray ANSI 61.

## Industry Standards

UL 50, File No. E27525, Type I  
NEMA/EEMAC Type I  
CSA, File No. LL42184, Type I  
IEC 60529, IP30

## Accessories

Flush Covers  
Flush-Mounted Door Frame  
Grounding Device  
Touch-Up Paint (A-TPPY61)

## Standard Sizes Screw Cover Pull Boxes

Catalog Number with Knockouts Painted	Catalog Number without Knockouts Galvanized	Catalog Number with Knockouts Painted	Catalog Number without Knockouts Galvanized	Box Size A x B x C	Number of Cover Screws	Knockout Pattern along "A" Sides	Knockout Pattern along "B" Sides
A-SE4X4X3	A-SG4X4X3	A-SE4X4X3NK	A-SG4X4X3NK	4.00 x 4.00 x 3.00 (102 x 102 x 76)	2	B-C	B-C
A-SE6X6X3	A-SG6X6X3	A-SE6X6X3NK	A-SG6X6X3NK	6.00 x 6.00 x 3.00 (152 x 152 x 76)	2	B-C-D	B-C-D
A-SE8X6X3	A-SG8X6X3	A-SE8X6X3NK	A-SG8X6X3NK	8.00 x 6.00 x 3.00 (203 x 152 x 76)	2	F-G-H-I	B-C-D
A-SE16X14X3	A-SG16X14X3	A-SE16X14X3NK	A-SG16X14X3NK	16.00 x 14.00 x 3.00 (406 x 356 x 76)	4	B-C-D-E-F-G-H	B-C-D-E-F-G-H
A-SE18X14X3	A-SG18X14X3	A-SE18X14X3NK	A-SG18X14X3NK	18.00 x 14.00 x 3.00 (457 x 356 x 76)	4	A-B-C-D-E-F-G-H-I	B-C-D-E-F-G-H
A-SE20X14X3	A-SG20X14X3	A-SE20X14X3NK	A-SG20X14X3NK	20.00 x 14.00 x 3.00 (508 x 356 x 76)	4	A-B-C-D-E-F-G-H-I	B-C-D-E-F-G-H
A-SE4X4X4	A-SG4X4X4	A-SE4X4X4NK	A-SG4X4X4NK	4.00 x 4.00 x 4.00 (102 x 102 x 102)	2	B-C	B-C
A-SE6X4X4	A-SG6X4X4	A-SE6X4X4NK	A-SG6X4X4NK	6.00 x 4.00 x 4.00 (152 x 102 x 102)	2	B-C-D	B-C
A-SE6X6X4	A-SG6X6X4	A-SE6X6X4NK	A-SG6X6X4NK	6.00 x 6.00 x 4.00 (152 x 152 x 102)	2	B-C-D	B-C-D
A-SE8X6X4	A-SG8X6X4	A-SE8X6X4NK	A-SG8X6X4NK	8.00 x 6.00 x 4.00 (203 x 152 x 102)	2	F-G-H-I	B-C-D
A-SE8X8X4	A-SG8X8X4	A-SE8X8X4NK	A-SG8X8X4NK	8.00 x 8.00 x 4.00 (203 x 203 x 102)	4	F-G-H-I	F-G-H-I
—	—	A-SE10X6X4NK	A-SG10X6X4NK	10.00 x 6.00 x 4.00 (254 x 152 x 102)	4	—	—
A-SE10X8X4	A-SG10X8X4	A-SE10X8X4NK	A-SG10X8X4NK	10.00 x 8.00 x 4.00 (254 x 203 x 102)	4	F-G-H-I	F-G-H-I
A-SE10X10X4	A-SG10X10X4	A-SE10X10X4NK	A-SG10X10X4NK	10.00 x 10.00 x 4.00 (254 x 254 x 102)	4	F-G-H-I	C-D-E-F-G
—	—	A-SE12X6X4NK	A-SG12X6X4NK	12.00 x 6.00 x 4.00 (305 x 152 x 102)	4	—	—
A-SE12X8X4	A-SG12X8X4	A-SE12X8X4NK	A-SG12X8X4NK	12.00 x 8.00 x 4.00 (305 x 203 x 102)	4	C-D-E-F-G	F-G-H-I
A-SE12X10X4	A-SG12X10X4	A-SE12X10X4NK	A-SG12X10X4NK	12.00 x 10.00 x 4.00 (305 x 254 x 102)	4	C-D-E-F-G	C-D-E-F-G
A-SE12X12X4	A-SG12X12X4	A-SE12X12X4NK	A-SG12X12X4NK	12.00 x 12.00 x 4.00 (305 x 305 x 102)	4	C-D-E-F-G	C-D-E-F-G
—	—	A-SE15X15X4NK	A-SG15X15X4NK	15.00 x 15.00 x 4.00 (381 x 381 x 102)	4	—	—
A-SE16X12X4	A-SG16X12X4	A-SE16X12X4NK	A-SG16X12X4NK	16.00 x 12.00 x 4.00 (406 x 305 x 102)	4	B-C-D-E-F-G-H	C-D-E-F-G
A-SE18X12X4	A-SG18X12X4	A-SE18X12X4NK	A-SG18X12X4NK	18.00 x 12.00 x 4.00 (457 x 305 x 102)	4	A-B-C-D-E-F-G-H-I	C-D-E-F-G
—	—	A-SE18X15X4NK	A-SG18X15X4NK	18.00 x 15.00 x 4.00 (457 x 381 x 102)	4	—	—
A-SE18X18X4	A-SG18X18X4	A-SE18X18X4NK	A-SG18X18X4NK	18.00 x 18.00 x 4.00 (457 x 457 x 102)	4	A-B-C-D-E-F-G-H-I	A-B-C-D-E-F-G-H-I

Continued on next page

**Standard Sizes Screw Cover Pull Boxes (Cont.)**

Catalog Number with Knockouts Painted	Catalog Number without Knockouts Galvanized	Catalog Number with Knockouts Painted	Catalog Number without Knockouts Galvanized	Box Size A x B x C	Number of Cover Screws	Knockout Pattern along "A" Sides	Knockout Pattern along "B" Sides
—	—	A-SE24X18X4NK	A-SG24X18X4NK	24.00 x 18.00 x 4.00 (610 x 457 x 102)	4	—	—
A-SE24X24X4	A-SG24X24X4	A-SE24X24X4NK	A-SG24X24X4NK	24.00 x 24.00 x 4.00 (610 x 610 x 102)	4	A-B-C-D-E-F-G-H-I	A-B-C-D-E-F-G-H-I
—	—	A-SE30X24X4NK	A-SG30X24X4NK	30.00 x 24.00 x 4.00 (762 x 610 x 102)	6	—	—
—	—	A-SE30X30X4NK	A-SG30X30X4NK	30.00 x 30.00 x 4.00 (762 x 762 x 102)	8	A-B-C-D-E-F-G-H-I	A-B-C-D-E-F-G-H-I
A-SE6X6X6	A-SG6X6X6	A-SE6X6X6NK	A-SG6X6X6NK	6.00 x 6.00 x 6.00 (152 x 152 x 152)	2	B-C-D	B-C-D
—	—	A-SE8X6X6NK	A-SG8X6X6NK	8.00 x 6.00 x 6.00 (203 x 152 x 152)	2	—	—
A-SE8X8X6	A-SG8X8X6	A-SE8X8X6NK	A-SG8X8X6NK	8.00 x 8.00 x 6.00 (203 x 203 x 152)	4	F-G-H-I	F-G-H-I
A-SE10X8X6	A-SG10X8X6	A-SE10X8X6NK	A-SG10X8X6NK	10.00 x 8.00 x 6.00 (254 x 203 x 152)	4	F-G-H-I	F-G-H-I
A-SE10X10X6	A-SG10X10X6	A-SE10X10X6NK	A-SG10X10X6NK	10.00 x 10.00 x 6.00 (254 x 254 x 152)	4	F-G-H-I	C-D-E-F-G
—	—	A-SE12X8X6NK	A-SG12X8X6NK	12.00 x 8.00 x 6.00 (305 x 203 x 152)	4	—	—
A-SE12X10X6	A-SG12X10X6	A-SE12X10X6NK	A-SG12X10X6NK	12.00 x 10.00 x 6.00 (305 x 254 x 152)	4	C-D-E-F-G	C-D-E-F-G
A-SE12X12X6	A-SG12X12X6	A-SE12X12X6NK	A-SG12X12X6NK	12.00 x 12.00 x 6.00 (305 x 305 x 152)	4	C-D-E-F-G	C-D-E-F-G
A-SE16X12X6	A-SG16X12X6	A-SE16X12X6NK	A-SG16X12X6NK	16.00 x 12.00 x 6.00 (406 x 305 x 152)	4	B-C-D-E-F-G-H	C-D-E-F-G
A-SE16X16X6	A-SG16X16X6	A-SE16X16X6NK	A-SG16X16X6NK	16.00 x 16.00 x 6.00 (406 x 406 x 152)	4	B-C-D-E-F-G-H	B-C-D-E-F-G-H
A-SE18X12X6	A-SG18X12X6	A-SE18X12X6NK	A-SG18X12X6NK	18.00 x 12.00 x 6.00 (457 x 305 x 152)	4	A-B-C-D-E-F-G-H-I	C-D-E-F-G
A-SE18X18X6	A-SG18X18X6	A-SE18X18X6NK	A-SG18X18X6NK	18.00 x 18.00 x 6.00 (457 x 457 x 152)	4	A-B-C-D-E-F-G-H-I	A-B-C-D-E-F-G-H-I
—	—	A-SE24X12X6NK	A-SG24X12X6NK	24.00 x 12.00 x 6.00 (610 x 305 x 152)	4	—	—
A-SE24X18X6	A-SG24X18X6	A-SE24X18X6NK	A-SG24X18X6NK	24.00 x 18.00 x 6.00 (610 x 457 x 152)	4	A-B-C-D-E-F-G-H-I	A-B-C-D-E-F-G-H-I
—	—	A-SE24X20X6NK	A-SG24X20X6NK	24.00 x 20.00 x 6.00 (610 x 508 x 152)	4	—	—
A-SE24X24X6	A-SG24X24X6	A-SE24X24X6NK	A-SG24X24X6NK	24.00 x 24.00 x 6.00 (610 x 610 x 152)	4	A-B-C-D-E-F-G-H-I	A-B-C-D-E-F-G-H-I
A-SE30X24X6	A-SG30X24X6	A-SE30X24X6NK	A-SG30X24X6NK	30.00 x 24.00 x 6.00 (762 x 610 x 152)	6	A-B-C-D-E-F-G-H-I	A-B-C-D-E-F-G-H-I
—	—	A-SE30X30X6NK	A-SG30X30X6NK	30.00 x 30.00 x 6.00 (762 x 762 x 152)	8	—	—
A-SE36X24X6	A-SG36X24X6	A-SE36X24X6NK	A-SG36X24X6NK	36.00 x 24.00 x 6.00 (914 x 610 x 152)	6	A-B-C-D-E-F-G-H-I	A-B-C-D-E-F-G-H-I
—	—	A-SE36X30X6NK	A-SG36X30X6NK	36.00 x 30.00 x 6.00 (914 x 762 x 152)	8	A-B-C-D-E-F-G-H-I	A-B-C-D-E-F-G-H-I
—	—	A-SE36X36X6NK	A-SG36X36X6NK	36.00 x 36.00 x 6.00 (914 x 914 x 152)	8	—	—
—	—	A-SE8X8X8NK	A-SG8X8X8NK	8.00 x 8.00 x 8.00 (203 x 203 x 203)	4	—	—
—	—	A-SE10X10X8NK	A-SG10X10X8NK	10.00 x 10.00 x 8.00 (254 x 254 x 203)	4	—	—
—	—	A-SE12X10X8NK	A-SG12X10X8NK	12.00 x 10.00 x 8.00 (305 x 254 x 203)	4	—	—
A-SE12X12X8	A-SG12X12X8	A-SE12X12X8NK	A-SG12X12X8NK	12.00 x 12.00 x 8.00 (305 x 305 x 203)	4	C-D-E-F-G	C-D-E-F-G
—	—	A-SE16X12X8NK	A-SG16X12X8NK	16.00 x 12.00 x 8.00 (406 x 305 x 203)	4	—	—
—	—	A-SE18X12X8NK	A-SG18X12X8NK	18.00 x 12.00 x 8.00 (457 x 305 x 203)	4	—	—
—	—	A-SE18X18X8NK	A-SG18X18X8NK	18.00 x 18.00 x 8.00 (457 x 457 x 203)	4	—	—
—	—	A-SE24X12X8NK	A-SG24X12X8NK	24.00 x 12.00 x 8.00 (610 x 305 x 203)	4	—	—
—	—	A-SE24X18X8NK	A-SG24X18X8NK	24.00 x 18.00 x 8.00 (610 x 457 x 203)	4	—	—
—	—	A-SE24X20X8NK	A-SG24X20X8NK	24.00 x 20.00 x 8.00 (610 x 508 x 203)	4	—	—
—	—	A-SE24X24X8NK	A-SG24X24X8NK	24.00 x 24.00 x 8.00 (610 x 610 x 203)	4	—	—
—	—	A-SE30X24X8NK	A-SG30X24X8NK	30.00 x 24.00 x 8.00 (762 x 610 x 203)	6	—	—
—	—	A-SE30X30X8NK	A-SG30X30X8NK	30.00 x 30.00 x 8.00 (762 x 762 x 203)	8	—	—
—	—	A-SE36X24X8NK	A-SG36X24X8NK	36.00 x 24.00 x 8.00 (914 x 610 x 203)	6	—	—

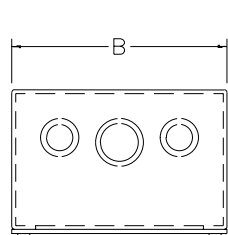
Continued on next page

# Screw Cover Pull Boxes; Accessories for Screw Cover Pull Boxes

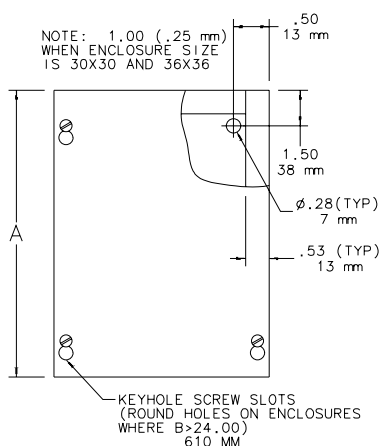
## Standard Sizes Screw Cover Pull Boxes (Cont.)

Catalog Number with Knockouts Painted	Catalog Number with Knockouts Galvanized	Catalog Number without Knockouts Painted	Catalog Number without Knockouts Galvanized	Box Size A x B x C	Number of Cover Screws	Knockout Pattern along "A" Sides	Knockout Pattern along "B" Sides
—	—	A-SE36X36X8NK	A-SG36X36X8NK	36.00 x 36.00 x 8.00 (914 x 914 x 203)	8	—	—
—	—	A-SE12X12X10NK	A-SG12X12X10NK	12.00 x 12.00 x 10.00 (305 x 305 x 203)	4	—	—
—	—	A-SE18X12X10NK	A-SG18X12X10NK	18.00 x 12.00 x 10.00 (457 x 305 x 203)	4	—	—
—	—	A-SE18X18X10NK	A-SG18X18X10NK	18.00 x 18.00 x 10.00 (457 x 457 x 203)	4	—	—
—	—	A-SE24X18X10NK	A-SG24X18X10NK	24.00 x 18.00 x 10.00 (610 x 457 x 203)	4	—	—
—	—	A-SE24X24X10NK	A-SG24X24X10NK	24.00 x 24.00 x 10.00 (610 x 610 x 203)	4	—	—
—	—	A-SE30X30X10NK	A-SG30X30X10NK	30.00 x 30.00 x 10.00 (762 x 762 x 203)	8	—	—
—	—	A-SE36X24X10NK	A-SG36X24X10NK	36.00 x 24.00 x 10.00 (914 x 610 x 203)	6	—	—
—	—	A-SE36X36X10NK	A-SG36X36X10NK	36.00 x 36.00 x 10.00 (914 x 914 x 203)	8	—	—
—	—	A-SE12X12X12NK	A-SG12X12X12NK	12.00 x 12.00 x 12.00 (305 x 305 x 305)	4	—	—
—	—	A-SE24X12X12NK	A-SG24X12X12NK	24.00 x 12.00 x 12.00 (610 x 305 x 305)	4	—	—
—	—	A-SE18X18X12NK	A-SG18X18X12NK	18.00 x 18.00 x 12.00 (457 x 457 x 305)	4	—	—
—	—	A-SE24X18X12NK	A-SG24X18X12NK	24.00 x 18.00 x 12.00 (610 x 457 x 305)	4	—	—
—	—	A-SE24X24X12NK	A-SG24X24X12NK	24.00 x 24.00 x 12.00 (610 x 610 x 305)	4	—	—
—	—	A-SE30X30X12NK	A-SG30X30X12NK	30.00 x 30.00 x 12.00 (762 x 762 x 305)	8	—	—
—	—	A-SE36X24X12NK	A-SG36X24X12NK	36.00 x 24.00 x 12.00 (914 x 610 x 305)	6	—	—
—	—	A-SE36X36X12NK	A-SG36X36X12NK	36.00 x 36.00 x 12.00 (914 x 914 x 305)	8	—	—
—	—	A-SE48X48X12NK	A-SG48X48X12NK	48.00 x 48.00 x 12.00 (1219 x 1219 x 305)	12	—	—
—	—	A-SE30X30X16NK	A-SG30X30X16NK	30.00 x 30.00 x 16.00 (762 x 762 x 406)	8	—	—
—	—	A-SE36X36X16NK	A-SG36X36X16NK	36.00 x 36.00 x 16.00 (914 x 914 x 406)	8	—	—
—	—	A-SE48X48X16NK	A-SG48X48X16NK	48.00 x 48.00 x 16.00 (1219 x 1219 x 406)	12	—	—

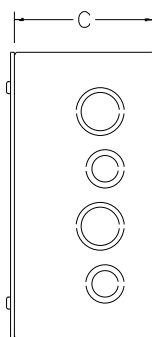
Millimeter dimensions ( ) are for reference only; do not convert metric dimensions to inch.



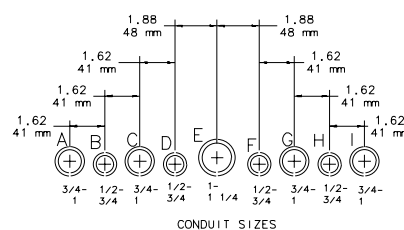
Top View



Front View



Side View



Knockout Pattern  
(from outside of box)

C2570

Inch  
Millimeter

NOTE: Refer to Table on previous two pages for applicable knockout pattern.



(Enclosure not included.)

### Flush Covers

Designed to mount on enclosure for flush installations. Cover is 16 or 14 gauge galvanized steel with ANSI 61 gray polyester powder finish.

#### Standard Sizes Flush Covers

Catalog Number	Cover Size	Fits Box Size A x B	Cover Gauge
A-FE6X6	7.50 x 7.50 (191 x 191)	6.00 x 6.00 (152 x 152)	16
A-FE8X6	9.50 x 7.50 (241 x 191)	8.00 x 6.00 (203 x 152)	16
A-FE8X8	9.50 x 9.50 (241 x 241)	8.00 x 8.00 (203 x 203)	16
A-FE10X8	11.50 x 9.50 (292 x 241)	10.00 x 8.00 (254 x 203)	16
A-FE10X10	11.50 x 11.50 (292 x 292)	10.00 x 10.00 (254 x 254)	16
A-FE12X8	13.50 x 9.50 (343 x 241)	12.00 x 8.00 (305 x 203)	16
A-FE12X12	13.50 x 13.50 (343 x 343)	12.00 x 12.00 (305 x 305)	16
A-FE18X12	19.50 x 13.50 (495 x 343)	18.00 x 12.00 (457 x 305)	16
A-FE18X18	19.50 x 19.50 (495 x 495)	18.00 x 18.00 (457 x 457)	16
A-FE24X18	25.50 x 19.50 (648 x 495)	24.00 x 18.00 (610 x 457)	14
A-FE24X24	25.50 x 25.50 (648 x 648)	24.00 x 24.00 (610 x 610)	14



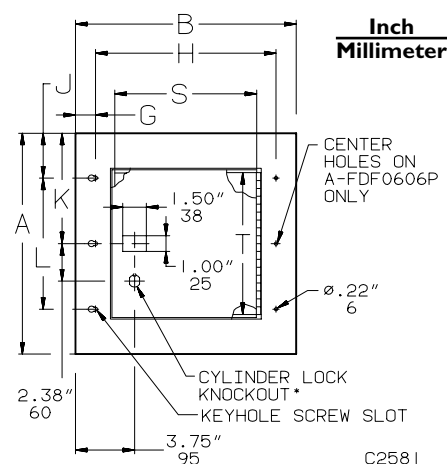
(Enclosure not included.)

### Flush-Mounted Door Frame

For use in Screw Cover Pull Box telephone cabinet installations, or in communication wiring and signal systems. Also as a junction or pull box and switch enclosure.

#### Features

- Continuous hinge
- Provisions for optional tamper-resistant lock kit
- 14 gauge galvanized steel door frame with ANSI 61 gray polyester powder finish
- Rugged black composite slide latch
- Optional tamper-resistant lock kit includes cylinder lock, tamper-resistant screws, and special driver bit



\* Not available on A-FDF0606P

#### Standard Sizes Flush-Mounted Door Frames

Catalog Number	Frame Size A x B	Door Size T	S	Fits Box Size A x B	G	H	J	K	L
A-FDF0606P	8.00 x 8.00 (203 x 203)	3.00 (76)	3.00 (76)	6.00 x 6.00 (152 x 152)	1.28 (32)	5.44 (138)	—	4.00 (102)	—
A-FDF1212P	14.00 x 14.00 (356 x 356)	9.00 (229)	9.00 (229)	12.00 x 12.00 (305 x 305)	1.28 (32)	11.44 (291)	2.84 (72)	7.00 (178)	8.31 (211)
A-FDF1812P	20.00 x 14.00 (508 x 356)	15.00 (381)	9.00 (229)	18.00 x 12.00 (457 x 305)	1.28 (32)	11.44 (291)	2.84 (72)	10.00 (254)	14.31 (364)
A-FDF1818P	20.00 x 20.00 (508 x 508)	15.00 (381)	15.00 (381)	18.00 x 18.00 (457 x 457)	1.28 (32)	17.44 (443)	2.84 (72)	10.00 (254)	14.31 (364)
A-FDF2418P	26.00 x 20.00 (660 x 508)	21.00 (533)	15.00 (381)	24.00 x 18.00 (610 x 457)	1.28 (32)	17.44 (443)	2.84 (72)	13.00 (330)	20.31 (516)
A-FDF2424P	26.00 x 26.00	21.00 (533)	21.00 (533)	24.00 x 24.00 (610 x 610)	1.30 (33)	23.41 (595)	2.84 (72)	13.00 (330)	20.31 (516)
A-FDF3024P	32.00 x 26.00 (813 x 660)	27.00 (686)	21.00 (533)	30.00 x 24.00 (762 x 610)	1.30 (33)	23.41 (595)	2.84 (72)	16.00 (406)	26.31 (668)
A-CLDF	Lock Kit*								

Millimeter dimensions ( ) are for reference only; do not convert metric dimensions to inch.

\* Not available on A-FDF0606P.